



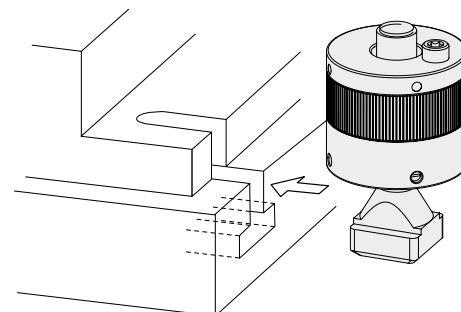
## Clamping Nut, Mechanical with through-hole thread, without clamping force display



### Advantages

- Temperature resistance up to 200 °C
- High clamping force with low torque
- Easy to retrofit
- Clamping nut with through-hole thread, therefore high adaptability to varying heights of clamping edges and tolerances
- Easy clamping and unclamping by hand
- Hydraulic-free and maintenance-free clamping
- Maximum force density in the smallest space

### Application example



### Application

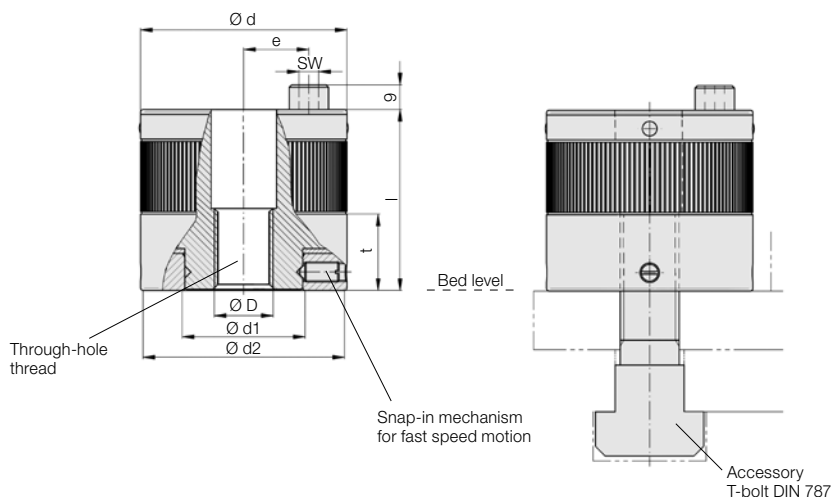
- Clamping and locking of dies on press bed and ram
- When highest clamping force is required in the smallest possible space
- If no hydraulic power unit is available
- Where oil-free clamping is desired

### Description

Following manual positioning of the clamping nut against the clamping edge, the integral gear nut will be operated by turning the hexagon socket. As a result of the gear transmission, the tightening torque is multiplied. To reliably ensure the required clamping force, we recommend using a torque wrench.

Material: free cutting steel, nitrocarburized

Temperature range: -30 °C to +200 °C



### Technical data

T-slot DIN 650	[mm]	14	18	22	28	36	42
<b>Clamping force</b>	<b>[kN]</b>	<b>60</b>	<b>60</b>	<b>60</b>	<b>120</b>	<b>180</b>	<b>180</b>
Tightening torque	[Nm]	20	35	40	75	100	110
D	[mm]	M12	M16	M20	M24	M30	M36
d	[mm]	74	74	74	84	105	105
d1	[mm]	40	40	40	50	64	64
d2	[mm]	72	72	72	82	103	103
l	[mm]	58	58	58	74	78	78
t	[mm]	23	23	23	32	37	37
SW	[mm]	8	8	8	8	8	8
<b>Clamping nut without T-bolt</b>							
Weight, approx.	[kg]	1.6	1.6	1.6	2.5	3.9	3.8
<b>Part no.</b>		<b>822750005</b>	<b>822750006</b>	<b>822750007</b>	<b>822760004</b>	<b>822770004</b>	<b>822770005</b>
<b>T-bolt, separate</b>							
<b>Part no.</b>		<b>107871210*</b>	<b>107871169</b>	<b>107870211</b>	<b>107871246</b>	<b>107870304</b>	<b>107870308</b>

Additional sizes as well as variations in the thread sizes are available on request.

\* For T-slot 14 mm, required strength 12.9

### Accessory

Torque wrench 20 – 100 Nm

**Part no. 937926610**

Torque wrench 40 – 200 Nm

**Part no. 937926620**