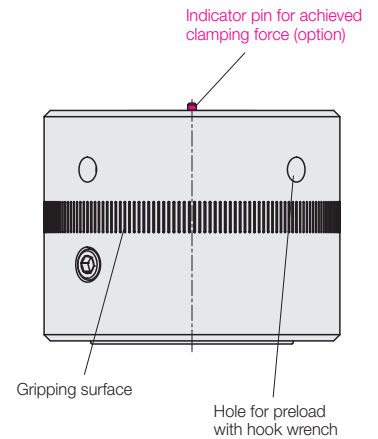


Clamping nuts, hydro-mechanical
with through-hole thread and optional clamping force display



Advantages

- Temperature resistance up to 120 °C
- Safe clamping with visual clamping force monitoring (as an option)
- High clamping force with low torque
- Easy to retrofit
- Clamping nut with through-hole thread, therefore high adaptability to varying heights of clamping edges and tolerances
- No need for adaptation of the tie rod length
- Easy clamping and unclamping by hand
- Maintenance free
- Maximum force density in the smallest space



Application

- Clamping and locking of dies on press bed and ram
- When highest clamping force is required in the smallest possible space
- If no hydraulic power unit is available

Clamping nut

with two tightening screws

Description

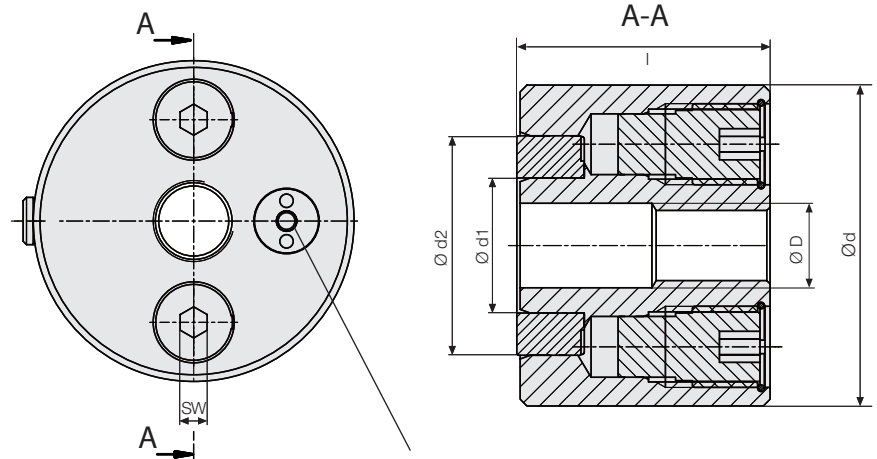
Following manual positioning of the clamping nut against the clamping edge, the integral hydraulic cushion is preloaded by turning the hexagon socket. A low torque is transmitted to a high clamping force.

In the case of versions without clamping force monitoring, use a torque wrench to ensure safe and defined build-up of the clamping force.

In the case of versions with clamping force monitoring, the clamping force indicator pin will project by approx. 2.5 mm when the clamping force is reached.

Admissible temperature difference ± 20 °C

Temperature resistance up to max. 120 °C.



Indicator pin for achieved clamping force (option)
When the nominal clamping force is achieved, projection of 2.5 mm.

Technical data

Clamping force	[kN]	15	30	60	100	100	150
Max. stroke*	[mm]	2	2	2	2	2	2
Tightening torque	[Nm]	9	9	9	30	30	40
D		M12	M16	M 20	M 24	M 30	M 30
d	[mm]	47	56	70	95	108	112
d1	[mm]	20	25	30	40	48	50
d2	[mm]	33	37	50	65	70	80
SW	[mm]	6	6	8	8	8	10
l	[mm]	54	61	71	75	75	90
Weight	[kg]	0.7	1.0	2.0	3.7	4.8	6.1
Clamping nut without T-bolt							
without clamping force display	Part no.	-	-	822750001	822760001	-	822770001
Clamping nut without T-bolt							
with clamping force display**	Part no.	822730002	822740002	822750002	822760002	822760005	822770002

* Stroke at maximum adjustment of tightening screws. Before activating the tightening screws preload nut with hook wrench.

** Allen key is included in the delivery, torque wrench is not required.

Dimensions Technical data

Accessories

T-bolt, separate

For T-slot	[mm]	14	18	22	28	36
Thread		M 12	M 16	M 20	M 24	M 30
Length	[mm]	160	160	200	250	250
Property class		8.8	12.9	12.9	12.9	8.8
Weight	[kg]	0.16	0.29	0.58	1.1	1.8
Part no.		5700142	5700022	5700023	5700024	5700048

Parking station during die change

Bracket mounted with spacer bars (without connecting block)

	Part no.	827531430	827531830	827532230	827532830	827533630
T-slot width k	[mm]	14	18	22	28	36
a	[mm]	65	70	72	85	90
Bracket, separate	Part no.	2753140	2753180	2753220	2753280	2753360

Special designs on request

