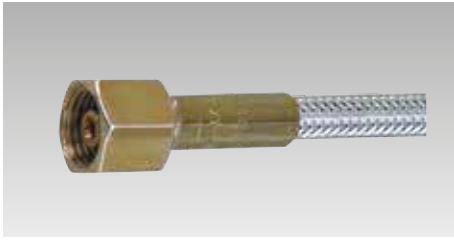




Hydraulic Accessories

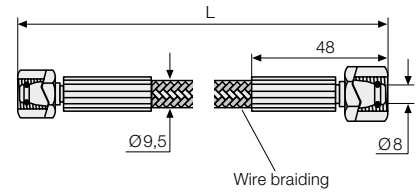
High-pressure hoses, connector blocks, couplings and plug-in connectors

High-pressure hoses ND4



Technical data

Burst pressure [bar]	2000
Smallest bending radius [mm]	100
Further information see DIN 20066	



Notes on high pressure hoses

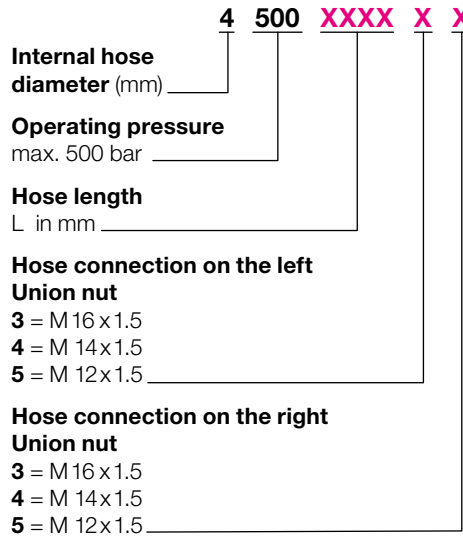
The freely selectable hose lengths should be generously dimensioned, in order to avoid kinking, abrasion marks, torsion, tensile and compressive stress and unacceptable bending radii. Protect against hot swarf.

Preferred lengths of the type 4500XXXX33

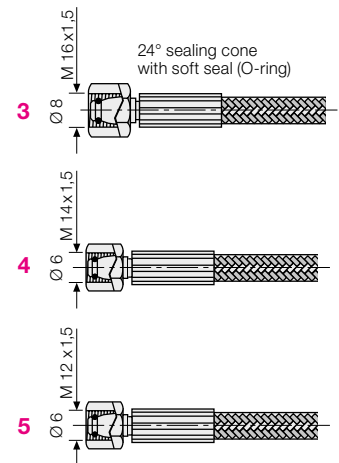
at both sides with hose connection
Union nut M 16 x 1.5 mm

Length [mm]	Part no.
600	270010131
800	270010133
1200	270010137
1600	270010141

Code for part numbers for variable lengths and connections

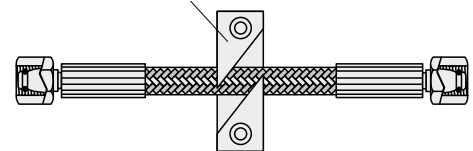


Hose connections on the left/right



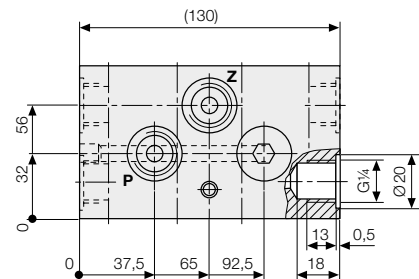
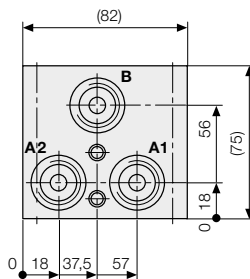
Accessories

Hose holder made from Delrin
Part no. 550650003



Connector block

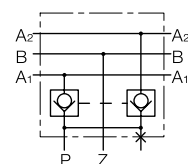
with pilot-operated check valves



Connecting thread	Part no.
2 x G 3/8 + 6 x G 1/4	898250290
8 x G 3/8	898250300

Control pressure = 0.38 x operating pressure + 12

Circuit diagram



Couplings and plug-in connectors

Quick-disconnect couplings

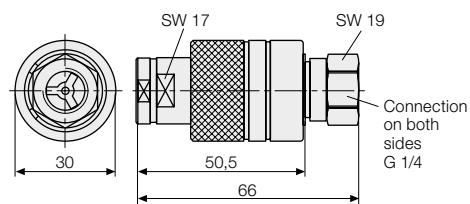


Description

The quick-disconnect couplings are couplings of sturdy design which lock automatically after uncoupling.

Connection and disconnection is made in the unpressurised condition.

The displacement of the sleeve to the corresponding coupling or uncoupling direction enables an easy one-hand operation.



Description

Description	Part no.
Coupling complete	9384 006
Coupler	9384 106
Nipple	9384 206
Dust cap for coupler	9384 300
Dust cap for nipple	9384 400
Spare seal O-ring	3001 091
Spare seal back-up ring	3000 228

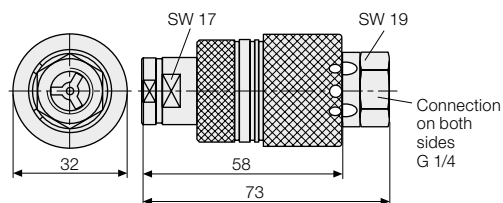
Coded couplings



Description

In case of more than one coupling port there is the risk of confusion when coupling. Coded couplings are not only marked by colour but additionally by means of a pin inside of the coupling which only fits into the groove of the corresponding nipple. The risk of confusion is thereby eliminated.

The easy handling of the coded Push-Pull couplings allows for a quick and safe finding of the mechanical code.

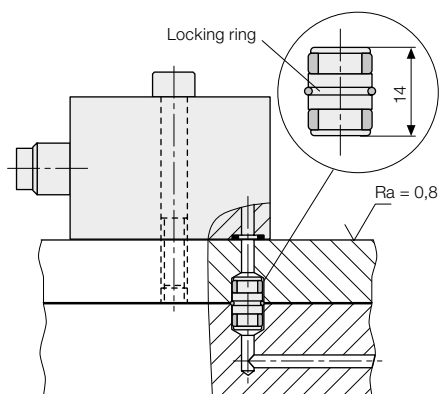


Coding	Part no. Coupling complete	Part no. Coupler separate	Part no. Nipple separate
black	9384 715	9384 716	9384 717
white*	9384 725	9384 726	9384 727
red	9384 735	9384 736	9384 737
yellow	9384 745	9384 746	9384 747
green	9384 755	9384 756	9384 757
blue	9384 765	9384 766	9384 767

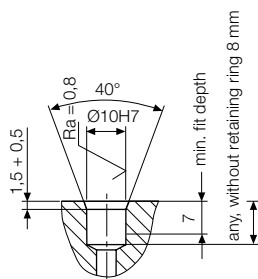
* The white coded nipple is provided with a preloaded valve (VSV) which limits a possible pressure built-up through internal leakages in hydraulic clamping elements to approx. 5 bar. The pre-loaded valve is not effective in coupled mode.

Plug-in connectors for plates and piping boards

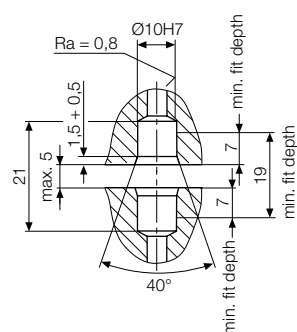
Installation example



Installation dimensions short version



Installation dimensions long version



Length	Nominal diameter [mm]	max. operating pressure [bar]	Sealing	Part no.
14 mm	5	500	FKM	9210 132
19 mm	5	500	FKM	9210 127