



Hydraulic Accessories

Pressure switches, valves, pressure gauges and hydraulic oil

Pressure switches

Pressure switch HDS

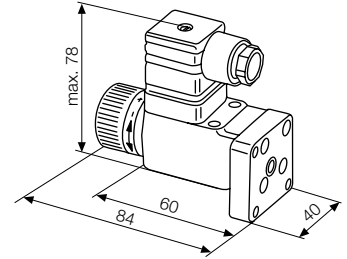


Description

Mini pressure switch, adjustable as a piston pressure switch

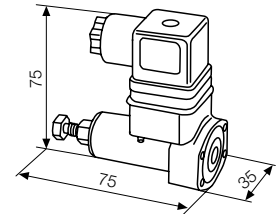
Technical data

Max. operating pressure [bar]	400
Temperature range [°C]	-40 up to +80
Connection	DIN ISO 16873



Description	Adjustment range [bar]	Part no.
HDS-1-120	10 – 120	294000051
HDS-1-250	25 – 250	294000052
HDS-1-400	40 – 400	294000053

Pressure switch DG



Description	Adjustment range [bar]	Part no.
DG 33	200 – 600	294000019
DG 34	100 – 350	294000020
DG 35	20 – 210	294000021

Accessories for pressure switches

Connecting plate for pipe connection G 1/4 for HDS	295020003
Plug with double LED and cable 1.5 m	209750036
Plug DIN 43650, plug insert 4 x 90° rotatable	209700012
Spare O-ring Ø 5 x 1.5 mm	195010026

Directional seat valve (WH1)



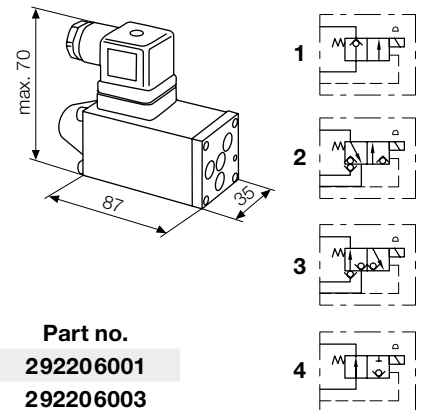
Description

3/2 directional control valve with leak-free and tight ball-type poppet valves. Compact design by integration of the valve components in the magnetic body.

The directional seat valve has an emergency stop.

Technical data

Max. flow rate [l/min]	8
Max. operating pressure [bar]	400
Temperature range [°C]	-40 up to +80
Solenoid voltage [V DC]	24



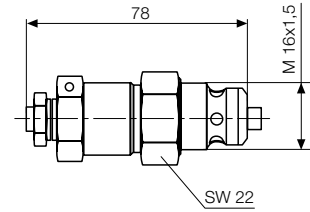
Description	Flow rate	Circuit diagram	Part no.
WH 1 D	8 l/min	1	292206001
WH 1 N	8 l/min	2	292206003
NBVP 16 Z	20 l/min	2	292206042
WH 1 R	8 l/min	3	292206004
NBVP 16 Y	20 l/min	3	292206043
WH 1 F	8 l/min	4	292206009
GZ 3-1 A24			292201042
G 3-1 A24	as per customer's request		292201043

Pressure relief valve



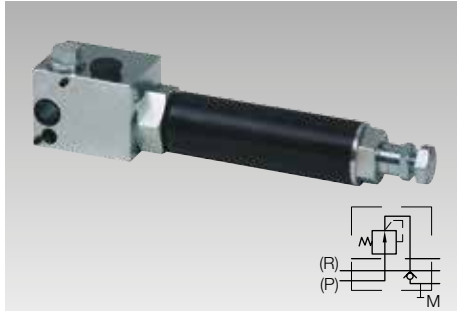
Description

Safety valve to prevent exceeding the maximum admissible pressure and for limiting operating pressures.



Description	Flow rate [l/min]	Part no.
CMV 1B - 420	20	292300114

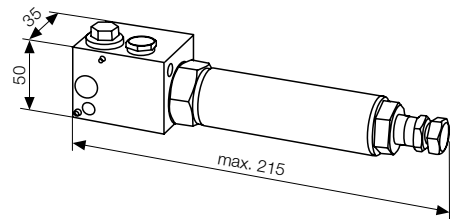
Pressure reducing valve



Description

Pressure control valve for keeping the lower output pressure in the secondary circuit constant without affecting the higher pressure in the primary circuit.

Screw-in type valve in combination with connector block.



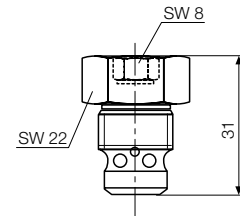
Description	Range of adjustment [bar]	Part no.
CZ 5/80/5R	15 – 130	292320023

Check valves



Description

Stop valves with free flow in one direction and blocked oil flow in the opposite direction.



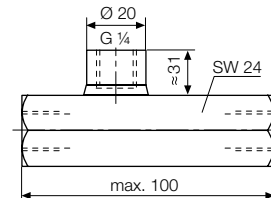
Description	Connection	Part no.
CRK 1	M 16 x 1.5	292500076

Check valves for pipe installation



Description

Check valves with one flow direction. Housing made from galvanised steel. Spring-loaded ball-type poppet valve, leakage-free Pilot-operated by hydraulic pressure Control pressure = 0.38 x operating pressure + 12



Description	Pilot operated	Connection	Graphical symbol	Part no.
B2-1	no	G 1/4		292500008
B2-2	no	G 3/8		292500009
B2-3	no	G 1/2		292500010
RH1	yes	G 1/4		292500047
RH2	yes	G 3/8		292500034

Pressure gauge



Description

Pressure gauge with steel pipe spring and glycerine filling. Ø 63 mm

Pressure range [bar]	Connection	Part no.
0 – 600	G 1/4, at the bottom	138660004
0 – 160	G 1/4, at the bottom	138660050
0 – 600	G 1/4, on the back	138660051

Hydraulic oil

Description	Temp. range [°C]	Container [l]	Part no.
HLP 32	10 – 50	1	698950010
HLP 32	10 – 50	5	698910010
HLP 46	20 – 60	1	698960010
HLP 46	20 – 60	5	698970010

Hydraulic oil Oemeta fire-resistant

Description	Temp. range [°C]	Part no.
HF-DU	10 – 200	on request

(e.g. for the use in forging presses)