

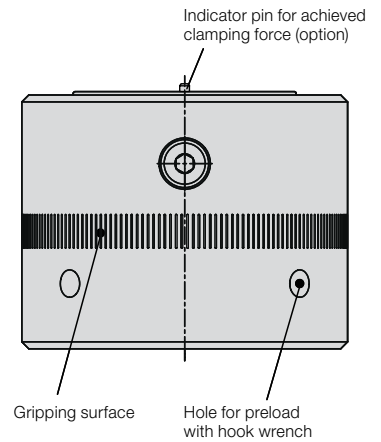


Clamping nut, hydro-mechanical with clamping force display and through-hole thread



Advantages

- maximum force density in the smallest space
- clamping nut with through-hole thread, therefore high adaptability to varying heights of clamping edges and tolerances
- safe clamping with optical clamping force monitoring (as an option)
- no need for adaptation of the tie rod length
- easy retrofit
- intensification of clamping force possible with multiple arrangement
- high clamping force with low torque
- easy clamping and unclamping by hand



Application

- Clamping and locking of dies on press bed and ram
- When highest clamping force is required in the smallest possible space
- If no hydraulic power unit is available

Description

Following manual positioning of the clamping nut against the clamping edge, the integral hydraulic cushion is preloaded by turning the hexagon socket. A low torque is transmitted to a high clamping force.

In the case of versions without clamping force monitoring, use a torque wrench to ensure safe and defined build-up of the clamping force.

In the case of versions with clamping force monitoring, the clamping force indicator pin will project by approx. 2.5 mm when the clamping force is reached.

Accessories

T-bolt, separate

For T-slot [mm]	22	28	36
Thread	M20	M24	M30
Tightening torque [Nm]	200	250	250
Property class	8.8	8.8	8.8
Part no.	5700-023	5700-024	5700-048

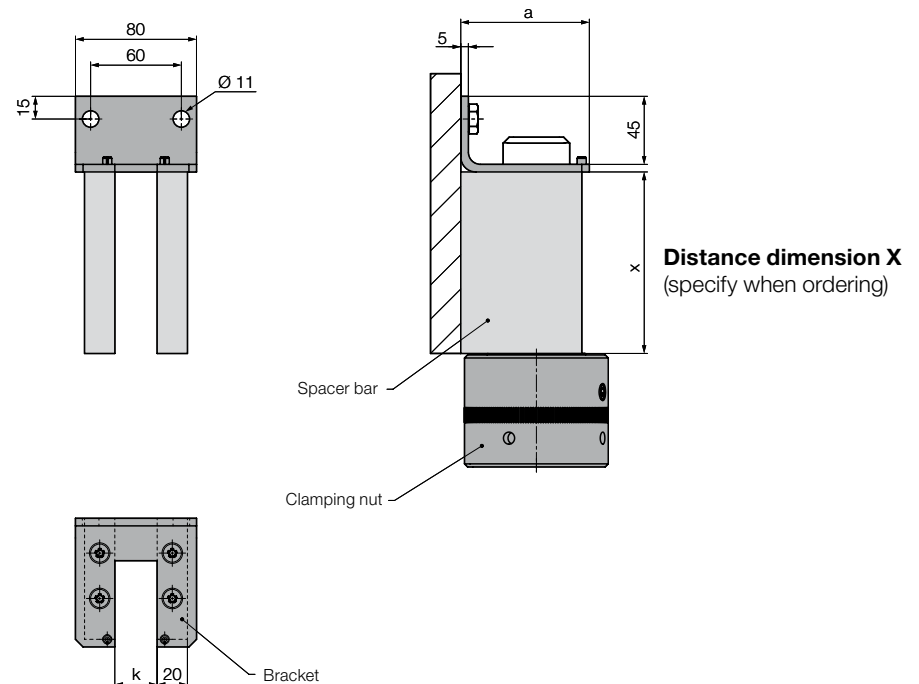
Parking station during die change

Bracket mounted with spacer bars (without connecting block)

Part no.	8.2753.2230	8.2753.2830	8.2753.3630
T-slot width [mm]	22	28	36
a [mm]	72	85	90

Bracket, separate	Part no.	2753-220	2753-280	2753-360
-------------------	----------	----------	----------	----------

Special designs on request



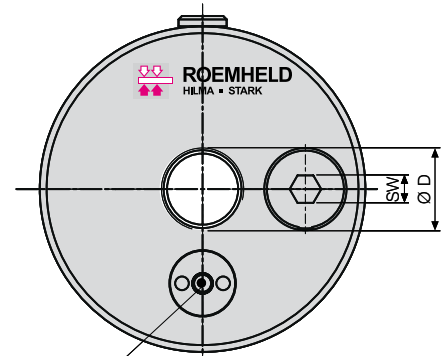
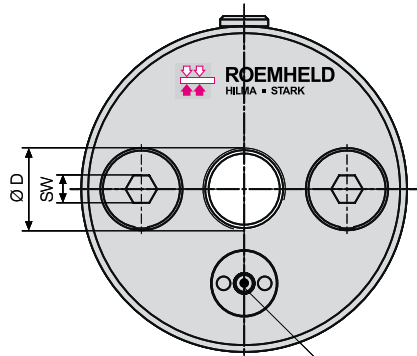
Dimensions Technical data

Clamping nut

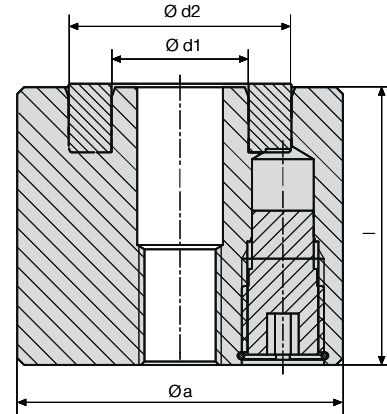
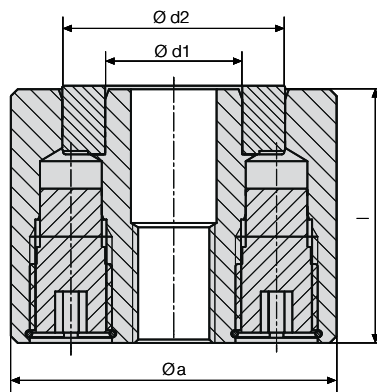
(without T-bolt: see accessories page 1)

Clamping nut with two tightening screws

Clamping nut with one tightening screw



Indicator pin for achieved clamping force (option)
When the nominal clamping force is achieved, projection of 2.5 mm.



with two tightening screws

with one tightening screw

Clamping force [kN]	[mm]	with two tightening screws			with one tightening screw	
		60	100	150	60	100
Max. stroke*	[mm]	2	2	2	2	2
Tightening torque	[Nm]	9	30	40	9	30
D	[mm]	M 20	M 24	M 30	M 20	M 24
a	[mm]	70	95	112	70	95
d1	[mm]	30	40	50	30	40
d2	[mm]	50	65	80	50	65
SW	[mm]	8	8	10	8	8
l	[mm]	71	75	90	87	91
Weight	[kg]	2.0	3.7	6.1	2.3	4.6
without clamping force display					not available	not available
Part no.		8.2275.0001	8.2276.0001	8.2277.0001		
with clamping force display**					8.2275.0102	8.2276.0102
Part no.		8.2275.0002	8.2276.0002	8.2277.0002		

* Stroke at maximum adjustment of tightening screws. Before activating the tightening screws preload nut with hook wrench.

** Supplied including Allen key, no torque wrench is required. Admissible temperature difference: ± 20 °C.